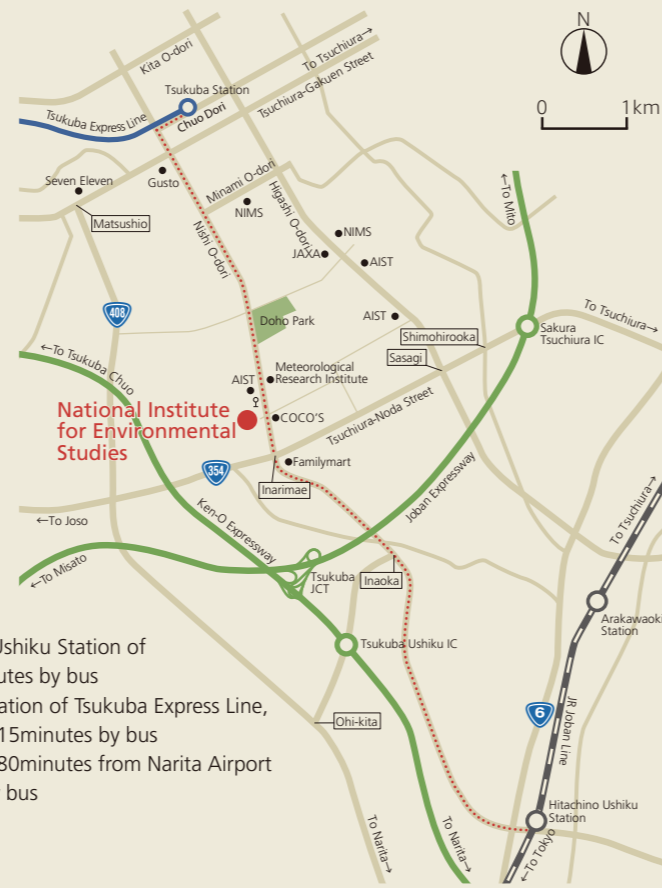


Center for Material Cycles and Waste Management Research
(Material Cycles and Waste Management Research Building)

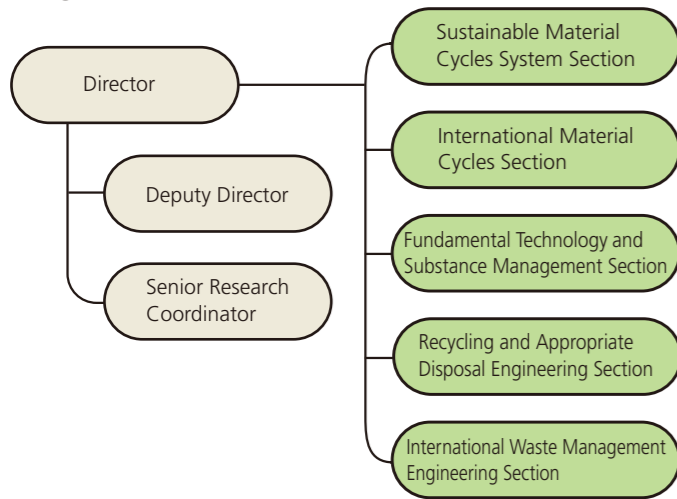


Map of National Institute for Environmental Studies



- Access
- 6km from Hitachino Ushiku Station of JR Joban Line, 20minutes by bus
 - 4km from Tsukuba Station of Tsukuba Express Line, 10minutes by taxi or 15minutes by bus
 - Approximately 60 to 80minutes from Narita Airport to Tsukuba Station by bus

Organization



History

January 1938	National Institute for Public Health established.
March 1974	National Institute for Environmental Studies (NIES) established.
April 1992	Waste Management Engineering Division established in National Institute for Public Health.
January 2001	Ministry of the Environment established as part of administrative reforms of the Japanese government (centralization of waste administration). Waste Management Research Division established in NIES (by transferring and integrating the Waste Management Engineering Division from the National Institute for Public Health).
April 2001	NIES established as an incorporated administrative agency. Waste Research Division expanded to Research Center for Material Cycles and Waste Management.
April 2011	Name of the Center changed to Center for Material Cycles and Waste Management Research (CMW).



National Institute for Environmental Studies
Center for Material Cycles and Waste Management Research

Onogawa 16-2, Tsukuba, Ibaraki 305-8506 Tel. 029-850-2372

<http://www-cycle.nies.go.jp/index-e.html>

リサイクル適性(A) Recycling Rank A: This paper can be recycled for printing. This publication is printed on paper manufactured entirely from recycled material (Rank A), in accordance with the Law Concerning the Promotion of Procurement of Eco-Friendly Goods and Services by the State and Other Entities.



2016031000



Center for Material Cycles and Waste Management Research

資源循環・廃棄物研究センター

Introduction to the roles and responsibilities of the Center for Material Cycles and Waste Management Research

The Center for Material Cycles and Waste Management Research is engaged in research to help resolve waste issues that are a negative consequence of production and consumption activities.

It is our mission to promote the transition toward a sound material-cycle society which harmonizes with the concepts of safety and security, low carbon footprint and coexistence with natural environment.

The Center also conducts environmental emergency research to help restore the environment of Fukushima prefecture promptly and to create a resilient and sustainable society in preparation to potential large-scale natural disasters.

Our center contributes to the sustainable use of resources and the reduction of the negative impact of waste materials to the environment

Main research areas

The 4th Research Plan, which begins in April 2016 and last until March 2021, will be implemented comprehensively to cover fundamental research to policy-oriented applied research in the fields of material cycles and waste management.

Integrated with the research activities, we also implement our research outputs to the society.

We support Fukushima Branch and collaborate in the field of environmental emergency research.

1 Project-Based Policy-Oriented Research Programs Sustainable Material Cycles Research Program

4 Environmental Emergency Management Strategy Facilitation Office

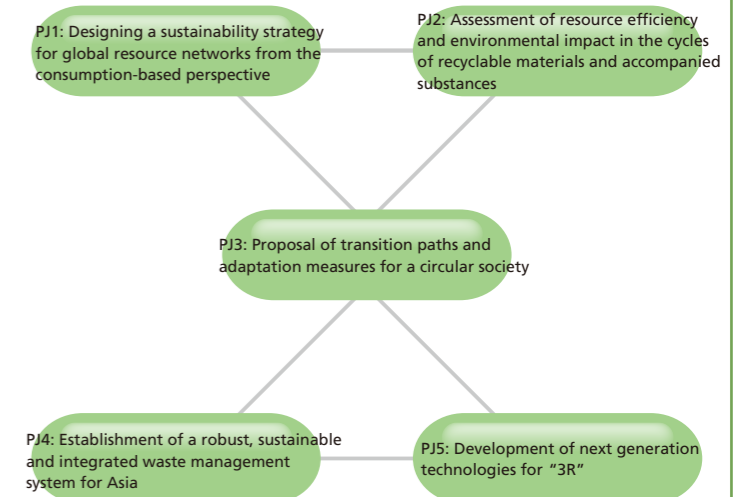
Through conducting Environmental Emergency Management Research Program, as well as research and project collaborations with related organizations in Japan and overseas, we attempt to promote strategic planning for Environmental Emergency management and to lay a foundation for the network building and management, knowledge management, capacity building of experts, field assistance in case of natural disasters, and international research hub formation of Environmental Emergency Management Research.

2 Prioritized areas of fundamental research Material Cycles and Waste Management Research

3 Environmental Emergency Research Program (collaboration with the Fukushima Branch) Environmental Recovery Research Program Environmental Emergency Management Research Program

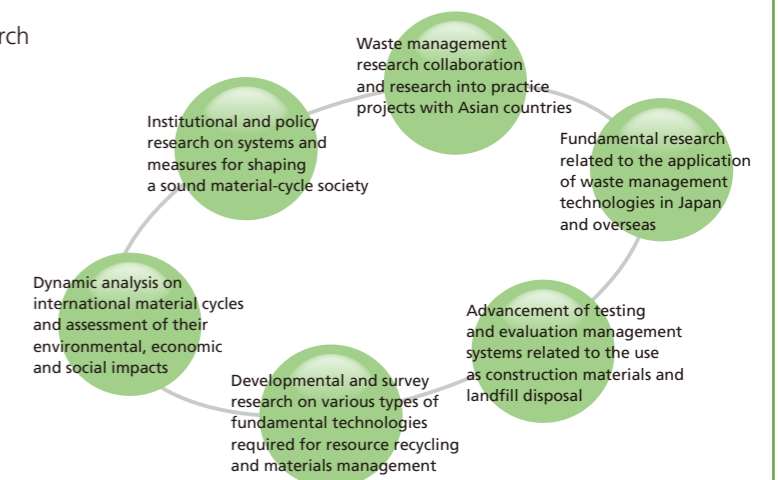
1 Project-Based Policy-Oriented Research Programs Sustainable Material Cycles Research Program

To help materialize the future vision for an international resource use strategy, this program will elucidate supply chain structures and the factors that shape those supply chains. Measures toward sustainable material cycle-based society shall be proposed based on the assessment of the effects of resource and environmental conservation throughout the life cycles of products and services. The program will also develop and evaluate measures for the advancement of sustainable, integrated waste management systems in Japan and in Asian region. Fundamental technologies and social system needed for waste prevention/minimization, reuse, and recycling in harmony with a low-carbon footprint society and other initiatives shall be also proposed.



2 Prioritized areas of fundamental research Material Cycles and Waste Management Research

We are investigating the current state and the mechanisms of the structure of resources use and the associated environmental burdens through socio-economic activities from local to international scale. Assessment methods and strategies for shifting to a sustainable, sound material-cycle society shall be proposed. We are also evaluating technologies and systems for treatment and recycling of waste and recyclable materials both in Japan and foreign countries and are developing fundamental technologies for material recycling and substance control in waste treatment and recycling processes as well.



Introduction of Research Laboratories

Research Laboratory of Material Cycles and Waste Management
Tsukuba, Ibaraki



This facility, which was established in March 2002, was designed to comprehensively promote measures for minimizing the generation of waste materials, promoting the recycling and appropriate treatment of materials, and reducing risks, among other things.

Bio-Eco Engineering Research Laboratory
Miho, Inashiki, Ibaraki



This facility, which was established in September 2002, was designed as a center of international activities for preserving and restoring water environments, and resolving material cycle issues, in Japan and overseas.

Fukushima Branch
Miharu, Tamura, Fukushima

In April 2016, the Fukushima Branch was established in the Environmental Creation Center of Fukushima prefecture to conduct research for restoring and recreating environments that have been contaminated by radioactive materials.

